

RH Series Power Relays

SPDT through 4PDT, 10A contacts Midget power relays

The RH series are miniature power relays with a large capacity. The RH relays feature 10A contact capacity as large as the RR series and the same size as IDEC's miniature relays. The compact size saves space.

- Cadmium free contact relays available.
- Lloyd Register type approved.
- UL, CSA certified. EN compliant.



- See website for details on approvals and standards.



Termination	Style	SPDT		DPDT	
		Part No.	Coil Voltage Code *	Part No.	Coil Voltage Code *
Plug-in Terminal	Basic	RH1B-U* RH1B-UW*	AC6, AC12, AC24, AC50, AC100, DC6, DC12, DC24, DC48	RH2B-U* RH2B-UW*	AC6, AC12, AC24, AC50, AC100-110, AC200-220, DC6, DC12, DC24, DC48, DC100-110
			DC100, DC110		AC110-120
			AC110, AC115, AC120		AC220-240
			AC200, AC220, AC230, AC240		
	With Indicator	RH1B-UL* RH1B-ULW*	AC6, AC12, AC24, AC50, AC100, DC6, DC12, DC24, DC48	RH2B-UL* RH2B-ULW*	AC6, AC12, AC24, AC50, AC100-110, AC200-220, DC6, DC12, DC24, DC48, DC100-110
			DC100, DC110		AC110-120
			AC110, AC115, AC120		AC220-240
	Top Bracket Mounting	RH1B-UT* RH1B-UTW*	AC6, AC12, AC24, AC50, AC100, DC6, DC12, DC24, DC48	RH2B-UT* RH2B-UTW*	AC6, AC12, AC24, AC50, AC100-110, AC200-220, DC6, DC12, DC24, DC48, DC100-110
			DC100, DC110		AC110-120
			AC110, AC115, AC120		AC220-240
	With Diode (DC coil only)	RH1B-UD* RH1B-UDW*	DC6, DC12, DC24, DC48	RH2B-UD* RH2B-UDW*	DC6, DC12, DC24, DC48, DC100-110
			DC100		
With Indicator and Diode (DC coil only)	RH1B-ULD* RH1B-ULDW*	DC6, DC12, DC24, DC48	RH2B-ULD* RH2B-ULDW*	DC6, DC12, DC24, DC48, DC100-110	
PC Board Terminal	Basic	RH1V2-U* RH1V2-UW*	AC6, AC12, AC24, AC50, AC100, DC6, DC12, DC24, DC48	RH2V2-U* RH2V2-UW*	AC6, AC12, AC24, AC50, AC100-110, AC200-220, DC6, DC12, DC24, DC48, DC100-110
			DC100, DC110		AC110-120
			AC110, AC115, AC120		AC220-240
			AC200, AC220, AC230, AC240		
	With Diode (DC coil only)	RH1V2-UD* RH1V2-UDW*	DC6, DC12, DC24, DC48	RH2V2-UD* RH2V2-UDW*	DC6, DC12, DC24, DC48, DC100-110
			DC100		

- Part number ending with W is cadmium free.

Part No. Development

When ordering, specify the Part No. and coil voltage code.

(Example) **RH2B-U** **AC100-110**
 Part No. Coil Voltage Code

RH Series Power Relays

Termination	Style	3PDT				4PDT			
		Part No.		Coil Voltage Code *		Part No.		Coil Voltage Code *	
Plug-in Terminal	Basic	RH3B-U* RH3B-UW*	AC6, AC12, AC24, AC50, AC100, AC200, DC6, DC12, DC24, DC48, DC100		RH4B-U* RH4B-UW*	AC6, AC12, AC24, AC50, AC100, AC200, DC6, DC12, DC24, DC48, DC100		AC110, AC115, AC120	AC220, AC230, AC240, DC110
			AC110, AC115, AC120			AC110, AC115, AC120			
			AC220, AC230, AC240, DC110			AC220, AC230, AC240, DC110			
	With Indicator	RH3B-UL* RH3B-ULW*	AC6, AC12, AC24, AC50, AC100, AC200		RH4B-UL* RH4B-ULW*	AC6, AC12, AC24, AC50, AC100, AC200, DC6, DC12, DC24, DC48, DC100		AC110, AC115, AC120	AC220, AC230, AC240, DC110
			AC110, AC115, AC120, DC6, DC12, DC24, DC48, DC100			AC110, AC115, AC120			
			AC220, AC230, AC240, DC110			AC220, AC230, AC240, DC110			
Top Bracket Mounting	RH3B-UT* RH3B-UTW*	AC6, AC12, AC24, AC50, AC100, AC110, AC115, AC120, AC200, AC220, AC230, AC240, DC6, DC12, DC24, DC48, DC100, DC110		RH4B-UT* RH4B-UTW*	AC6, AC12, AC24, AC50, AC100, AC200, DC6, DC12, DC24, DC48, DC100		AC110, AC115, AC120	AC220, AC230, AC240, DC110	
		AC110, AC115, AC120			AC220, AC230, AC240, DC110				
With Diode (DC coil only)	RH3B-D*(Note) RH3B-DW*(Note)	DC6, DC12, DC24, DC48, DC100, DC110		RH4B-UD* RH4B-UDW*	DC6, DC12, DC24, DC48, DC100, DC110				
With Indicator and Diode (DC coil only)	RH3B-LD*(Note) RH3B-LDW*(Note)	DC6, DC12, DC24, DC48, DC100, DC110		RH4B-ULD* RH4B-ULDW*	DC6, DC12, DC24, DC48, DC100, DC110				
PC Board Terminal	Basic	RH3V2-U* RH3V2-UW*	AC6, AC12, AC24, AC50, AC100, AC200, DC6, DC12, DC24, DC48, DC100		RH4V2-U* RH4V2-UW*	AC6, AC12, AC24, AC50, AC100, AC200, DC6, DC12, DC24, DC48, DC100		AC110, AC115, AC120	AC220, AC230, AC240, DC110
			AC110, AC115, AC120			AC110, AC115, AC120			
			AC220, AC230, AC240, DC110			AC220, AC230, AC240, DC110			
	With Indicator	RH3V2-UL* RH3V2-ULW*	AC6, AC12, AC24, AC50, AC100, AC200		RH4V2-UL* RH4V2-ULW*	AC6, AC12, AC24, AC50, AC100, AC200, DC6, DC12, DC24, DC48, DC100		AC110, AC115, AC120	AC220, AC230, AC240, DC110
			AC110, AC115, AC120, DC6, DC12, DC24, DC48, DC100			AC110, AC115, AC120			
			AC220, AC230, AC240, DC110			AC220, AC230, AC240, DC110			
With Diode (DC coil only)	RH3V2-D*(Note) RH3V2-DW*(Note)	DC6, DC12, DC24, DC48, DC100, DC110		RH4V2-UD* RH4V2-UDW*	DC6, DC12, DC24, DC48, DC100, DC110				
With Indicator and Diode (DC coil only)	RH3V2-LD*(Note) RH3V2-LDW*(Note)	DC6, DC12, DC24, DC48, DC100, DC110		RH4V2-ULD* RH4V2-ULDW*	DC6, DC12, DC24, DC48, DC100, DC110				

Note: No standard approval.

- Part number ending with W is cadmium free.

Part No. Development

When ordering, specify the Part No. and coil voltage code.

(Example) **RH4B-U** **AC100**

Part No. Coil Voltage Code

Coil Ratings

Rated Voltage (V)				Rated Current (mA) ±15% at 20°C								Coil Resistance (Ω) ±10% at 20°C				Operation Characteristics (against rated values at 20°C)			
SPDT	DPDT	3PDT	4PDT	50Hz				60Hz				SPDT	DPDT	3PDT	4PDT	Max. Continuous Applied Voltage	Min. Pickup Voltage	Dropout Voltage	
				SPDT	DPDT	3PDT	4PDT	SPDT	DPDT	3PDT	4PDT								
AC (50/60Hz)	6	6	6	6	170	240	330	387	150	200	280	330	18.8	9.34	6.4	5.8	110%	80% maximum	30% minimum
	12	12	12	12	86	121	165	196	75	100	140	165	76.8	39.3	25.3	23.1			
	24	24	24	24	42	60.5	81	98	37	50	70	83	300	152	103	84.5			
	50	50	50	50	20.5	28.9	39.5	47	18	24	34	40	1,280	676	460	340			
	100	100-110	100	100	10.5	10.3-11.8	20	23.5	9	9.1-10.0	17	20	5,220	3,360	1,940	1,560			
	110	—	110	110	9.6	—	18.1	21.6	8.4	—	15.5	18.2	6,950	—	2,200	1,800			
	115	110-120	115	115	8.9	9.4-10.8	17.1	20.8	7.8	8.0-9.2	14.8	17.5	7,210	4,290	2,620	1,910			
	120	—	120	120	8.6	—	16.4	19.5	7.5	—	14.2	16.5	8,100	—	2,770	2,220			
	200	200-220	200	200	5.6	5.1-5.9	9.8	11.8	4.9	4.3-5.0	8.5	10	21,442	13,690	8,140	6,360			
	220	—	220	220	4.7	—	8.8	10.7	4.1	—	7.7	9.1	25,892	—	10,810	7,360			
	230	220-240	230	230	4.7	4.7-5.4	8.5	10.3	4.1	4.0-4.6	7.4	8.7	26,710	18,820	11,460	8,520			
240	—	240	240	4.9	—	8.2	9.8	4.3	—	7.1	8.3	26,710	—	12,110	9,120				
DC	SPDT	DPDT	3PDT	4PDT	SPDT	DPDT	3PDT	4PDT	SPDT	DPDT	3PDT	4PDT	SPDT	DPDT	3PDT	4PDT	110%	80% maximum	10% minimum
	6	6	6	6	128	150	240	250	47	40	25	24							
	12	12	12	12	64	75	120	125	188	160	100	96							
	24	24	24	24	32	37.5	60	62	750	640	400	388							
	48	48	48	48	18	18.8	30	31	2,660	2,560	1,600	1,550							
	100	100-110	100	100	10	8.2-9.0	14.5	15	10,000	12,250	6,900	6,670							
110	—	110	110	8	—	12.8	15	13,800	—	8,600	7,340								

Contact Ratings

Maximum Contact Capacity						
Contact	Continuous Current	Allowable Contact Power		Rated Load		
		Resistive Load	Inductive Load	Voltage (V)	Res. Load	Ind. Load
SPDT	10A	1540VA AC 300W DC	990VA AC 210W DC	110 AC	10A	7A
				220 AC	7A	4.5A
				30 DC	10A	7A
DPDT 3PDT 4PDT	10A	1650VA AC 300W DC	1100VA AC 225W DC	110 AC	10A	7.5A
				220 AC	7.5A	5A
				30 DC	10A	7.5A

Note: Inductive load for the rated load — $\cos \phi = 0.3$, L/R = 7 ms

Approval Ratings

UL Ratings (silver cadmium oxide)

Voltage	Resistive			General use			Horse Power Rating		
	RH1 RH2	RH3	RH4	RH1 RH2	RH3	RH4	RH1 RH2	RH3	RH4
240V AC	10A	7.5A	7.5A	7A	6.5A	5A	1/3 HP	1/3 HP	—
120V AC	—	10A	10A	—	7.5A	7.5A	1/6 HP	1/6 HP	—
30V DC	10A	10A	—	7A	—	—	—	—	—
28V DC	—	—	10A	—	—	—	—	—	—

UL Ratings (cadmium free)

Voltage	Resistive			General use			Horse Power Rating		
	RH1 RH2	RH3	RH4	RH1 RH2	RH3	RH4	RH1 RH2	RH3	RH4
240V AC	10A	10A	10A	10A	10A	10A	1/3 HP	1/3 HP	—
120V AC	—	—	—	—	—	—	1/6 HP	1/6 HP	—
30V DC	10A	10A	10A	7A	—	—	—	—	—

CSA Ratings (Silver cadmium oxide/cadmium free)

Voltage	Resistive				General use				Horse Power Rating
	RH1	RH2	RH3	RH4	RH1	RH2	RH3	RH4	RH1, 2, 3
240V AC	10A	10A	10A	10A	7A	7A	7A	5A	1/3 HP
120V AC	10A	10A	10A	10A	7.5A	7.5A	—	7.5A	1/6 HP
30V DC	10A	10A	10A	10A	7A	7.5A	—	—	—

TÜV Ratings (silver cadmium oxide/cadmium free)

Voltage	RH1	RH2	RH3	RH4
240V AC	10A	10A	7.5A	7.5A
30V DC	10A	10A	10A	10A

AC: $\cos \phi = 1.0$, DC: L/R = 0 ms

Specifications

Contact Material	Silver cadmium oxide/cadmium free (Ag-alloy)	
Contact Resistance *1	50 mΩ maximum	
Minimum Applicable Load	24V DC, 30 mA; 5V DC, 100 mA (reference value)	
Operate Time *2	SPDT/DPDT	20 ms maximum
	3PDT/4PDT	25 ms maximum
Release Time *2	SPDT/DPDT	20 ms maximum
	3PDT/4PDT	25 ms maximum
Power Consumption (approx.)	SPDT	AC: 1.1 VA (50 Hz), 1 VA (60 Hz), DC: 0.8W
	DPDT	AC: 1.4 VA (50 Hz), 1.2 VA (60 Hz), DC: 0.9W
	3PDT	AC: 2 VA (50 Hz), 1.7 VA (60 Hz), DC: 1.5W
	4PDT	AC: 2.5 VA (50 Hz), 2 VA (60 Hz), DC: 1.5W
Insulation Resistance	100 MΩ minimum (500V DC megger)	
Dielectric Strength	SPDT	Between live and dead parts: 2000V AC, 1 minute *3 Between contact and coil: 2000V AC, 1 minute Between contacts of the same pole: 1000V AC, 1 minute
	DPDT/3PDT/4PDT	Between live and dead parts: 2000V AC, 1 minute Between contact and coil: 2000V AC, 1 minute Between contacts of different poles: 2000V AC, 1 minute Between contacts of the same pole: 1000V AC, 1 minute
Operating Frequency	Electrical:	1,800 operations/h maximum
	Mechanical:	18,000 operations/h maximum
Vibration Resistance	Damage limits:	10 to 55 Hz, amplitude 0.5 mm
	Operating extremes:	10 to 55 Hz, amplitude 0.5 mm
Shock Resistance	Damage limits:	1,000 m/s ²
	Operating extremes:	200 m/s ² (SPDT, DPDT) 100 m/s ² (3PDT, 4PDT)
Mechanical Life	50,000,000 operations minimum	
Electrical Life	DPDT	Silver cadmium oxide contact: 500,000 operations minimum (110V AC, 10A) Cadmium free (Ag-alloy) contact: 300,000 operations minimum
	SPDT/3PDT/4PDT	200,000 operations minimum (110V AC, 10A)
Operating Temperature *4	SPDT	-25 to +50°C (no freezing)
	DPDT/3PDT/4PDT	-25 to +40°C (no freezing)
Operating Humidity	45 to 85% RH (no condensation)	
Storage Temperature	-55 to +70°C (no freezing)	
Storage Humidity	45 to 85% RH (no condensation)	
Weight (approx.)	SPDT: 24g, DPDT: 37g, 3PDT: 50g, 4PDT: 74g	

Note: Above values are initial values.

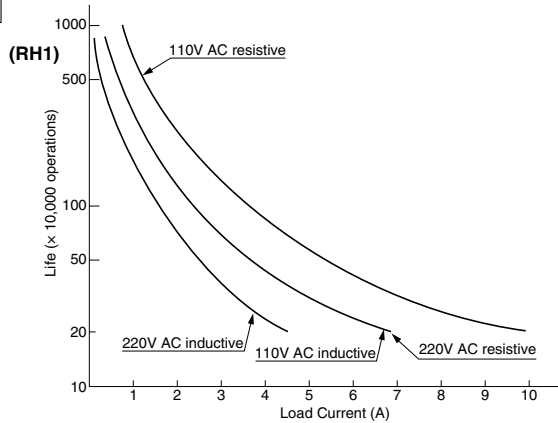
- *1: Measured using 5V DC, 1A voltage drop method
- *2: Measured at the rated voltage (at 20°C), excluding contact bouncing
Release time of relays with diode: 40 ms maximum
- *3: Relays with indicator or diode: 1000V AC, 1 minute
- *4: For use under different temperature conditions, refer to Continuous Load Current vs. Operating Temperature Curve. The operating temperature range of relays with indicator or diode is -25 to +40°C.

RH Series Power Relays

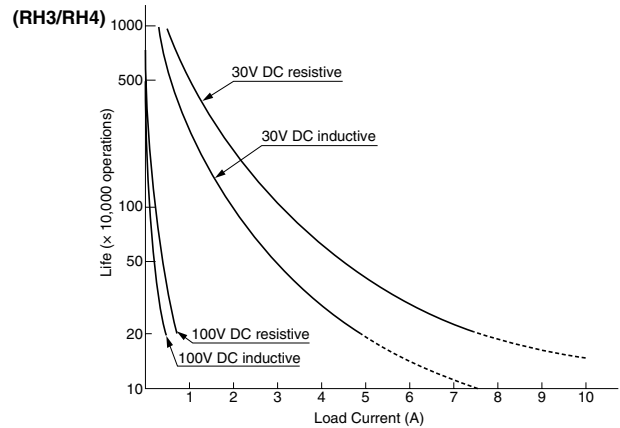
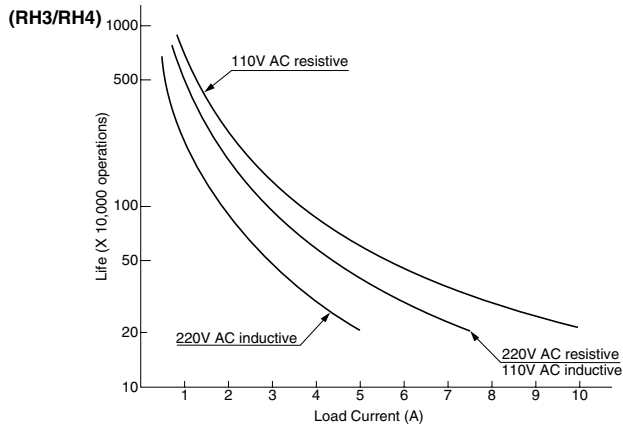
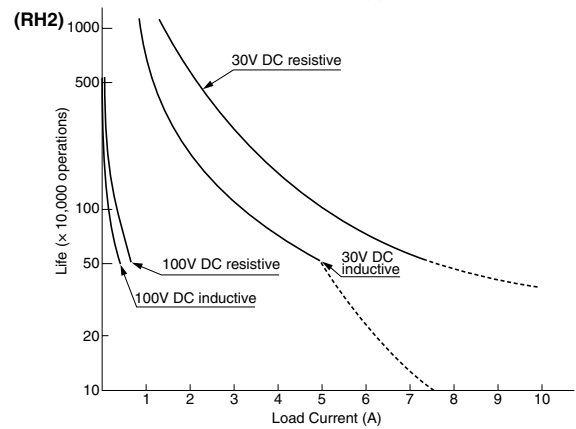
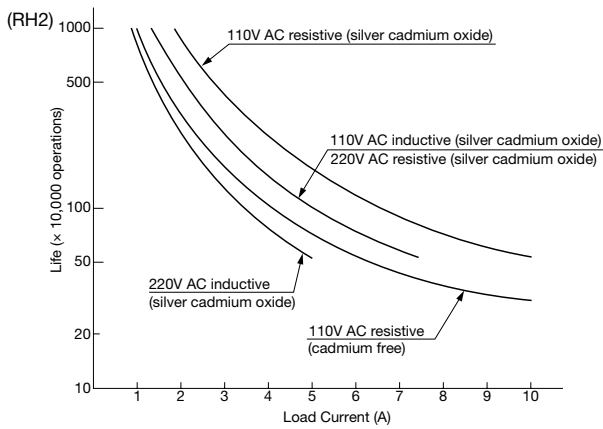
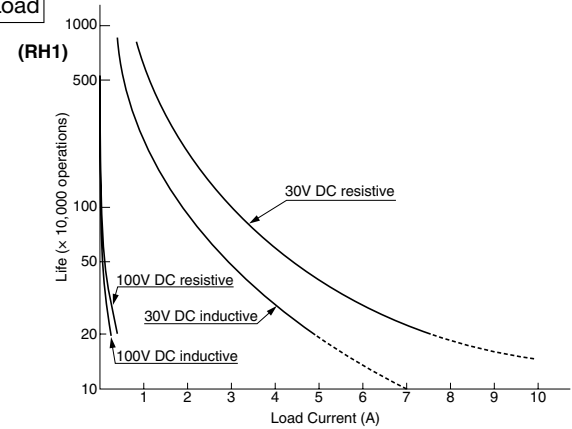
Characteristics (Reference Data)

Electrical Life Curve

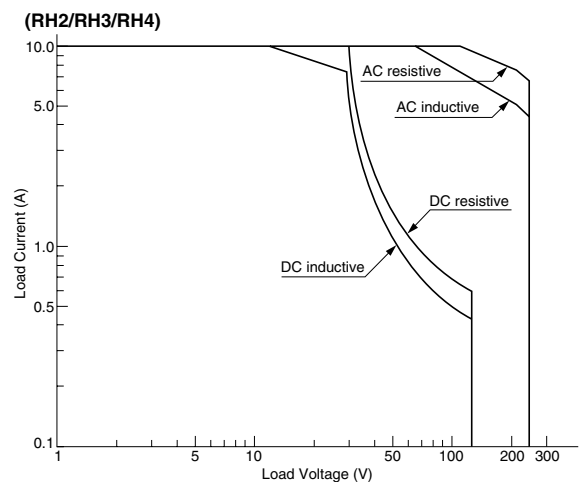
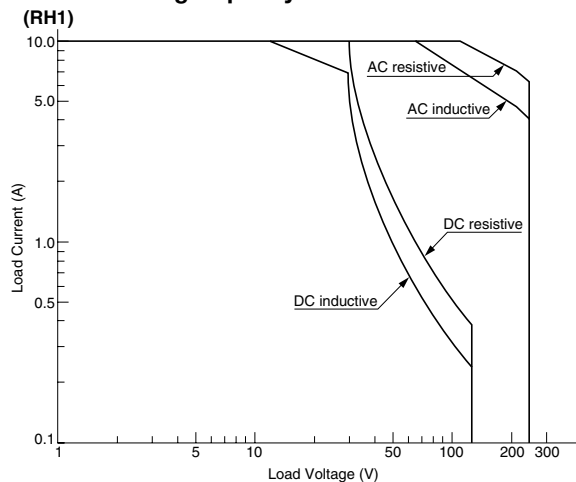
AC Load



DC Load

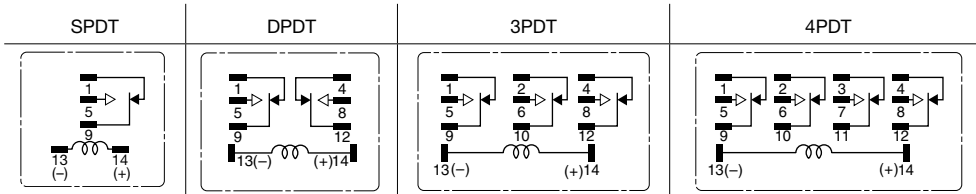


Maximum Switching Capacity

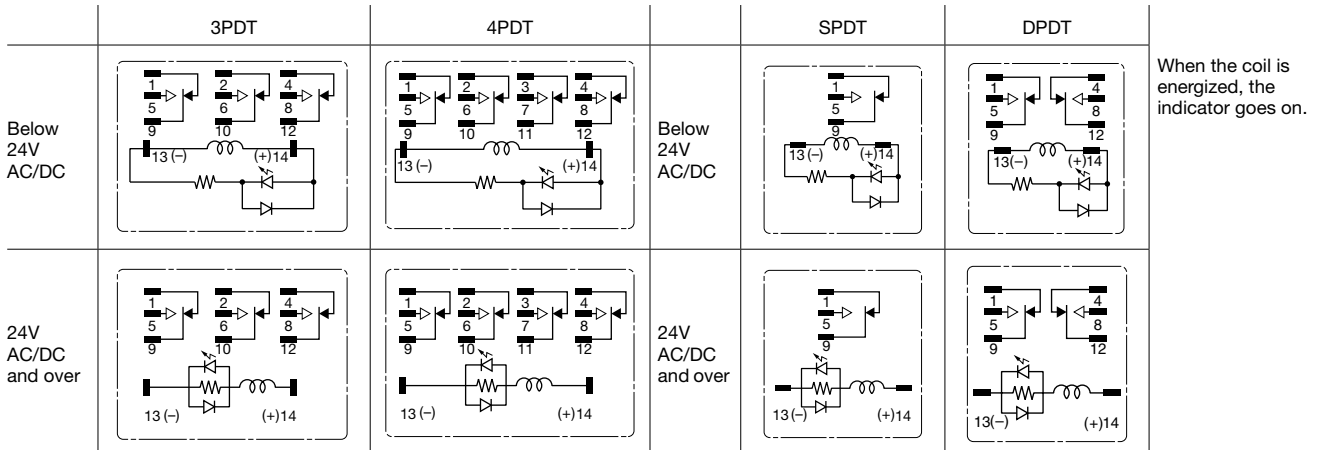


Internal Connection (Bottom View)

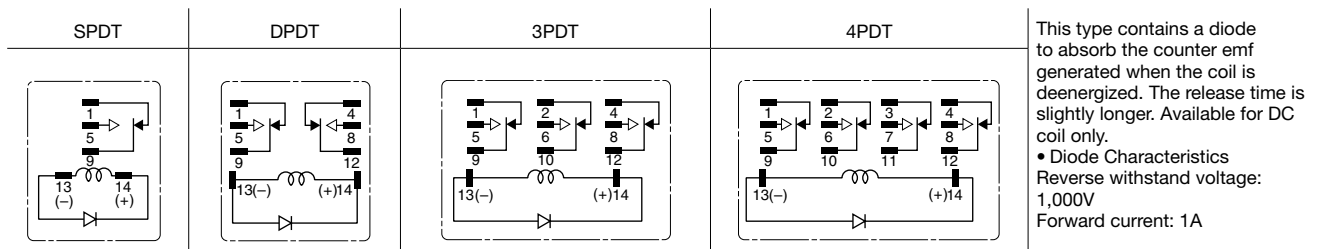
Basic



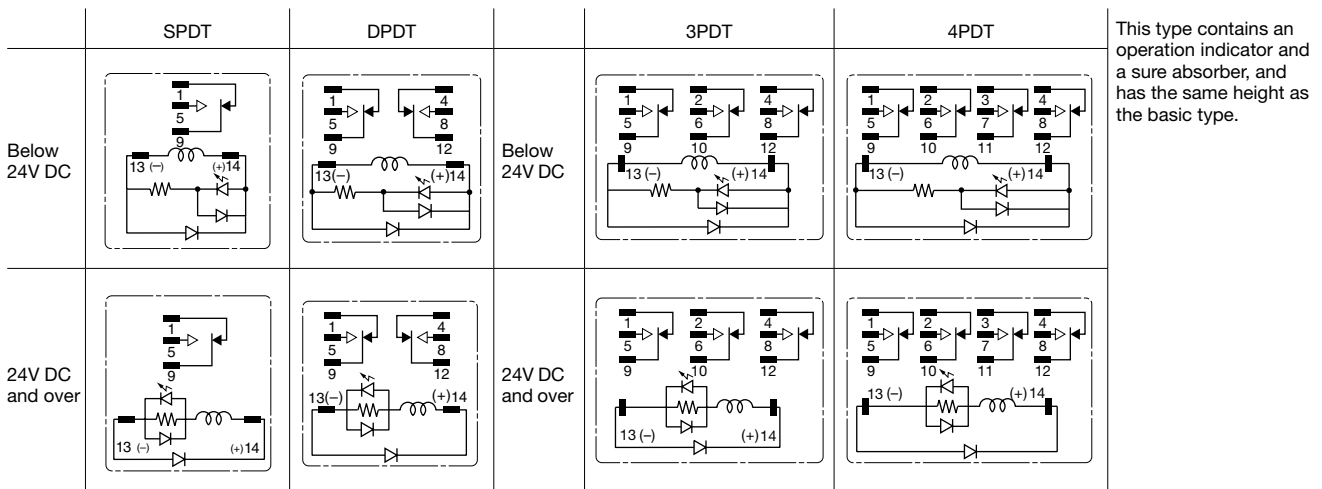
With Indicator (-L)



With Diode (-D)



With Indicator and Diode (-LD)

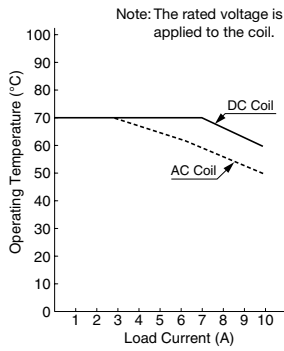


RH Series Power Relays

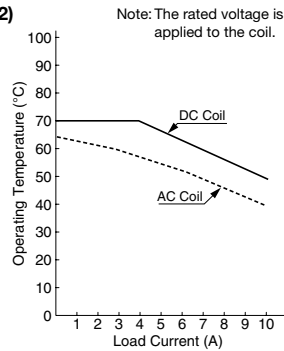
Characteristics (Reference Data)

Continuous Load Current vs. Operating Temperature Curve (Basic and Top Bracket Mounting)

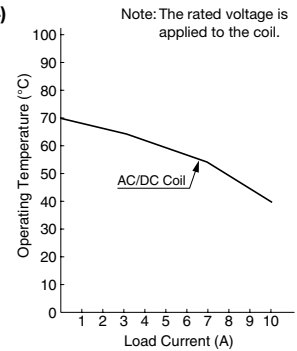
(RH1)



(RH2)



(RH3/RH4)

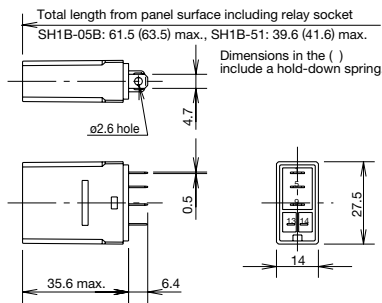


Dimensions

SPDT Plug-in Terminal
RH1B-U/RH1B-UL/RH1B-UD/ULD



(Photo: RH1B-U)



Applicable Socket and Hold-down Spring

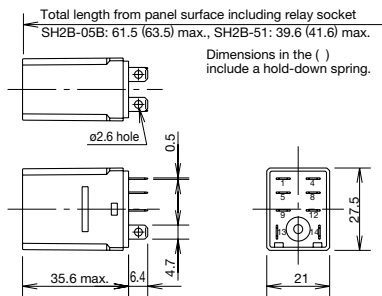
Mounting Style	Socket	
	Part No.	Hold-down Spring
DIN Rail Mount Socket	SH1B-05*	SFA-101 SFA-202
Panel Mount Socket	SH1B-51	SY4S-51F1 SFA-301
PC Board Mount Socket	SH1B-62	SFA-302

DPDT Plug-in Terminal
RH2B-U/RH2B-UL/RH2B-UD/RH2B-ULD



(Photo: RH2B-U)

Note: For SH2B-5D, use SFA-502 hold-down spring.



Applicable Socket and Hold-down Spring

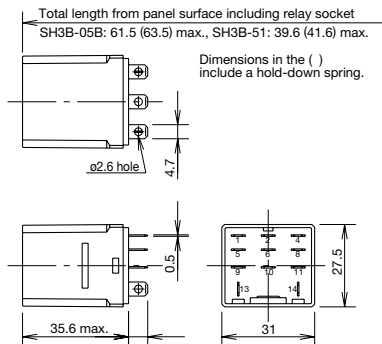
Mounting Style	Socket	
	Part No.	Hold-down Spring
DIN Rail Mount Socket	SH2B-05* (Note)	SFA-202 SFA-101
Panel Mount Socket	SH2B-51	SY4S-51F1 SFA-302(Note) SFA-301(Note) (SY4S-02F1)
PC Board Mount Socket	SH2B-62	

Note: Not applicable with SH2B-62.
• (SY4S-02F1) is for the relay with check button.

3PDT Plug-in Terminal
RH3B-U/RH3B-UL/RH3B-D/RH3B-LD



(Photo: RH3B-U)

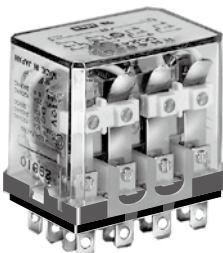


Applicable Socket and Hold-down Spring

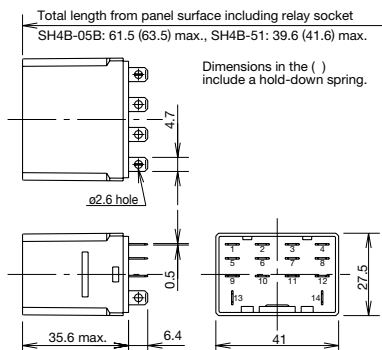
Mounting Style	Socket	
	Part No.	Hold-down Spring
DIN Rail Mount Socket	SH3B-05*	SFA-101 SFA-202
Panel Mount Socket	SH3B-51	SY4S-51F1 SFA-301
PC Board Mount Socket	SH3B-62	SFA-302 (SH3B-05F1)

• (SH3B-05F1) is for the relay with check button.

4PDT Plug-in Terminal
RH4B-U/RH4B-UL/RH4B-UD/RH4B-ULD



(Photo: RH4B-U)



Applicable Socket and Hold-down Spring

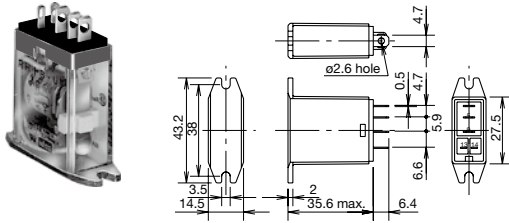
Mounting Style	Socket	
	Part No.	Hold-down Spring
DIN Rail Mount Socket	SH4B-05*	SFA-101 SFA-202
Panel Mount Socket	SH4B-51	SY4S-51F1 (Note) SFA-301
PC Board Mount Socket	SH4B-62	SFA-302 (SH4B-02F1)

Note: Use two SY4S-51F1 hold-down springs for the SH4B-51 socket.

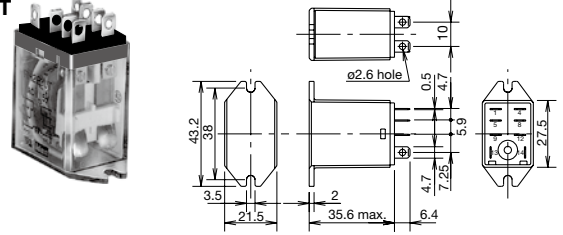
• (SH4B-02F1) is for the relay with check button.

RH Series Power Relays

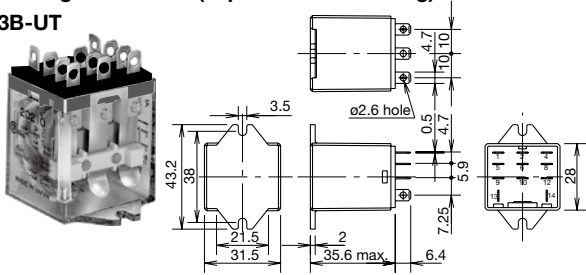
SPDT Plug-in Terminal (Top Bracket Mounting) RH1B-UT



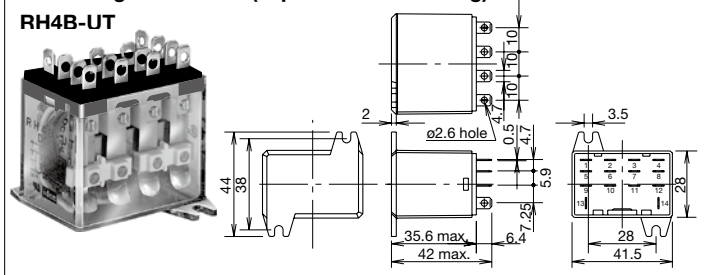
DPDT Plug-in Terminal (Top Bracket Mounting) RH2B-UT



3PDT Plug-in Terminal (Top Bracket Mounting) RH3B-UT



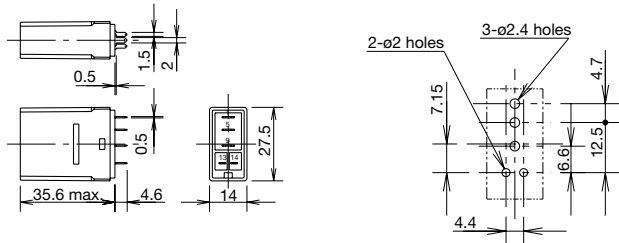
4PDT Plug-in Terminal (Top Bracket Mounting) RH4B-UT



SPDT PC Board Terminal RH1V2-U/RH1V2-UD



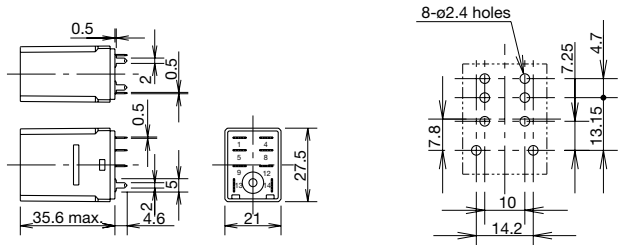
(Photo: RH1V2-U)



DPDT PC Board Terminal RH2V2-U/RH2V2-UD



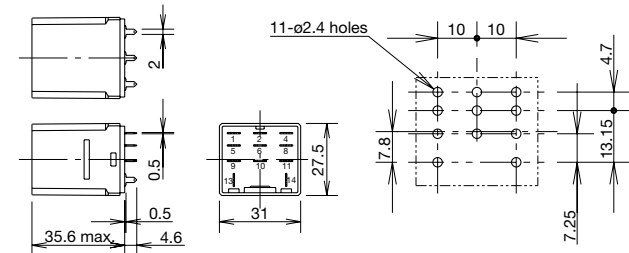
(Photo: RH2V2-U)



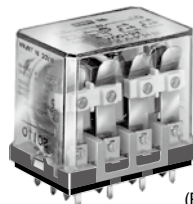
3PDT PC Board Terminal RH3V2-U/RH3V2-UL/ RH3V2-D/RH3V2-LD



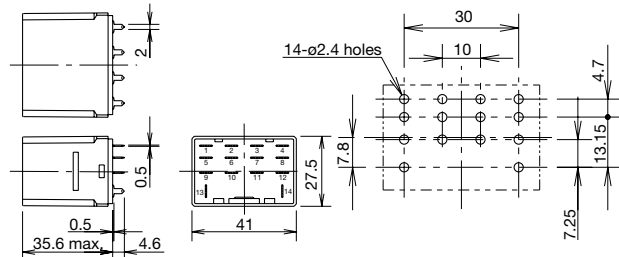
(Photo: RH3V2-U)



4PDT PC Board Terminal RH4V2-U/RH4V2-UL/ RH4V2-UD/RH4V2-ULD



(Photo: RH4V2-U)



All dimensions in mm.

Ordering Terms and Conditions

Thank you for using IDEC Products.

By purchasing products listed in our catalogs, datasheets, and the like (hereinafter referred to as "Catalogs") you agree to be bound by these terms and conditions. Please read and agree to the terms and conditions before placing your order.

1. Notes on contents of Catalogs

- (1) Rated values, performance values, and specification values of IDEC products listed in this Catalog are values acquired under respective conditions in independent testing, and do not guarantee values gained in combined conditions.
Also, durability varies depending on the usage environment and usage conditions.
- (2) Reference data and reference values listed in Catalogs are for reference purposes only, and do not guarantee that the product will always operate appropriately in that range.
- (3) The specifications / appearance and accessories of IDEC products listed in Catalogs are subject to change or termination of sales without notice, for improvement or other reasons.
- (4) The content of Catalogs is subject to change without notice.

2. Note on applications

- (1) If using IDEC products in combination with other products, confirm the applicable laws / regulations and standards.
Also, confirm that IDEC products are compatible with your systems, machines, devices, and the like by using under the actual conditions. IDEC shall bear no liability whatsoever regarding the compatibility with IDEC products.
- (2) The usage examples and application examples listed in Catalogs are for reference purposes only. Therefore, when introducing a product, confirm the performance and safety of the instruments, devices, and the like before use. Furthermore, regarding these examples, IDEC does not grant license to use IDEC products to you, and IDEC offers no warranties regarding the ownership of intellectual property rights or non-infringement upon the intellectual property rights of third parties.
- (3) When using IDEC products, be cautious when implementing the following.
 - i. Use of IDEC products with sufficient allowance for rating and performance
 - ii. Safety design, including redundant design and malfunction prevention design that prevents other danger and damage even in the event that an IDEC product fails
 - iii. Wiring and installation that ensures the IDEC product used in your system, machine, device, or the like can perform and function according to its specifications
- (4) Continuing to use an IDEC product even after the performance has deteriorated can result in abnormal heat, smoke, fires, and the like due to insulation deterioration or the like. Perform periodic maintenance for IDEC products and the systems, machines, devices, and the like in which they are used.
- (5) IDEC products are developed and manufactured as general-purpose products for general industrial products. They are not intended for use in the following applications, and in the event that you use an IDEC product for these applications, unless otherwise agreed upon between you and IDEC, IDEC shall provide no guarantees whatsoever regarding IDEC products.
 - i. Use in applications that require a high degree of safety, including nuclear power control equipment, transportation equipment (railroads / airplanes / ships / vehicles / vehicle instruments, etc.), equipment for use in outer space, elevating equipment, medical instruments, safety devices, or any other equipment, instruments, or the like that could endanger life or human health
 - ii. Use in applications that require a high degree of reliability, such as provision systems for gas / waterworks / electricity, etc., systems that operate continuously for 24 hours, and settlement systems
 - iii. Use in applications where the product may be handled or used deviating from the specifications or conditions / environment listed in the Catalogs, such as equipment used outdoors or applications in environments subject to chemical pollution or electromagnetic interference
If you would like to use IDEC products in the above applications, be sure to consult with an IDEC sales representative.

3. Inspections

We ask that you implement inspections for IDEC products you purchase without delay, as well as thoroughly keep in mind management/maintenance regarding handling of the product before and during the inspection.

4. Warranty

- (1) Warranty period
The warranty period for IDEC products shall be one (1) year after purchase or delivery to the specified location. However, this shall not apply in cases where there is a different specification in the Catalogs or there is another agreement in place between you and IDEC.
- (2) Warranty scope
Should a failure occur in an IDEC product during the above warranty period for reasons attributable to IDEC, then IDEC shall replace or repair that product, free of charge, at the purchase location / delivery location of the product, or an IDEC service base. However, failures caused by the following reasons shall be deemed outside the scope of this warranty.
 - i. The product was handled or used deviating from the conditions / environment listed in the Catalogs
 - ii. The failure was caused by reasons other than an IDEC product
 - iii. Modification or repair was performed by a party other than IDEC
 - iv. The failure was caused by a software program of a party other than IDEC
 - v. The product was used outside of its original purpose
 - vi. Replacement of maintenance parts, installation of accessories, or the like was not performed properly in accordance with the user's manual and Catalogs
 - vii. The failure could not have been predicted with the scientific and technical standards at the time when the product was shipped from IDEC
 - viii. The failure was due to other causes not attributable to IDEC (including cases of force majeure such as natural disasters and other disasters)Furthermore, the warranty described here refers to a warranty on the IDEC product as a unit, and damages induced by the failure of an IDEC product are excluded from this warranty.

5. Limitation of liability

The warranty listed in this Agreement is the full and complete warranty for IDEC products, and IDEC shall bear no liability whatsoever regarding special damages, indirect damages, incidental damages, or passive damages that occurred due to an IDEC product.

6. Service scope

The prices of IDEC products do not include the cost of services, such as dispatching technicians. Therefore, separate fees are required in the following cases.

- (1) Instructions for installation / adjustment and accompaniment at test operation (including creating application software and testing operation, etc.)
- (2) Maintenance inspections, adjustments, and repairs
- (3) Technical instructions and technical training
- (4) Product tests or inspections specified by you

The above content assumes transactions and usage within your region. Please consult with an IDEC sales representative regarding transactions and usage outside of your region. Also, IDEC provides no guarantees whatsoever regarding IDEC products sold outside your region.

IDEC CORPORATION

Head Office 6-64, Nishi-Miyahara-2-Chome, Yodogawa-ku, Osaka 532-0004, Japan

 www.idec.com

USA IDEC Corporation
EMEA APEM SAS

Singapore IDEC Izumi Asia Pte. Ltd.
Thailand IDEC Asia (Thailand) Co., Ltd.
India IDEC Controls India Private Ltd.

China IDEC (Shanghai) Corporation
IDEC Izumi (H.K.) Co., Ltd.
Taiwan IDEC Taiwan Corporation

Japan IDEC Corporation

Specifications and other descriptions in this brochure are subject to change without notice.

2022 IDEC Corporation, All Rights Reserved.

