

AFSA Foot Switch

IP54 rated foot switch with contact blocks used as internal contacts.

- Rust-proof with Munsell N5 gray Hammertone coating.
- Equipped with a protective shroud to prevent unintended operation.
- Outstanding resistance to corrosion and weather conditions.

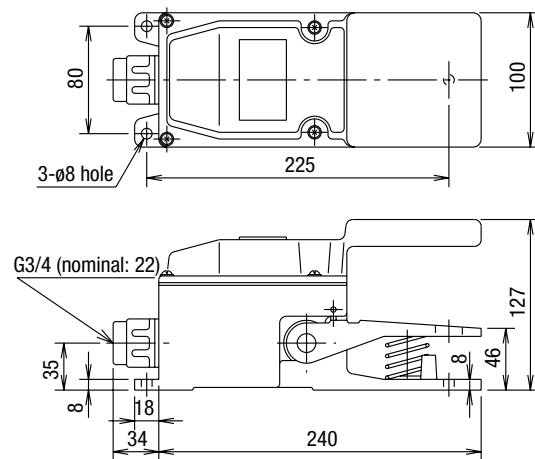


Specifications

Degree of protection	IP54 (IEC 60529)		
Rated voltage	110V AC	220V AC	440V AC
Rated current	5A	3A	1A
Rated insulation voltage	600V		
Rated continuous current	10A		
Life	500,000 times minimum		
Operation frequency	1200 operations per hour		
Insulation resistance	5MΩ minimum (500V DC megger)		
Dielectric strength	2500V AC, 1 minute (between live and dead parts)		
Cable entrance	With hub body HN22 G3/4 (nominal 22) x 1		
Force	Initial force	20N	
	Operating force	50 to 60N	
Pedal stroke	20mm		
Material	Cast iron		
Standard coating color	Munsell N5 (approximate color: Hammertone gray)		
Standard operating conditions	Ambient temperature: -25 to +50°C (no freezing) Relative humidity: 45 to 85%RH (no condensation)		
Weight (approx.)	5.2kg		

Dimensions

All dimensions in mm.



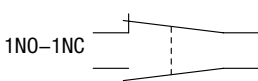
AFSA Foot Switch

Quantity: 1

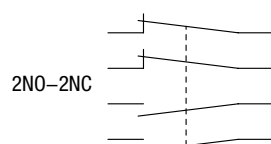
Name	Contact configuration	Part No.
AFSA	1NO-1NC	AFSA111
	2NO-2NC	AFSA122

Contact configuration

AFSA111



AFSA122



- BS010E (NO contact) and BS001E (NC contact) contact blocks are used.